

FELUNIANA

TECHNICAL RIDER

(Version MAY 2019)

1 – Electricity (light / sound / video)

35 Kw total electricity required

We need 2 separate lines (in case of different solution, please contact us)

First line 20 Kw max for dimming line (CEE power box of 63A with minimum 4 plug 32A 380-400v for dimmer)

Second line 15 Kw max for direct line (CEE power box of 32A with minimum 6 plug 16A 230v for the stage area + audio and video)

We use **a lot of water during the show**, so we need safety electric cables.

Available for the artist from the beginning of construction.

The promoter is responsible for the cable connection between the point of power and the plug at the light wind-up / PA speakers / mixer-desk.

If there is used a generator to produce the electricity, this machine shall be noiseless (well covered) or it shall be installed in a distance of ca 50 meters to the playground (+ cables needed).

If local security asks to cover cables around the playground, this is the responsibility of the promoter.
For sure we need to cover our VIDEO CABLE from the mixer desk to the front/center of the stage area (normally 15 meters >> it depends from the venue). 15 meters (or more) of cable carpet or cable cover / cable cross

We need **3 connections 220 Volt plug 3 pole** (1 center/back side, 1 center/front side and 1 left side of the stage area of the stage area for the use of VIDEO DEVICE and SCENERY STUFF – no DIMMER line)

We use the CEE BLUE PLUG 2P+T 16A 220V.

We have some adapters with us: Schuko Plug adaptor / Italian AC Power Plug adaptor.

Check : please let us know about the connections / adapters in time before our arrivals in case we have to arrange a solution.

2 – Video + Light + Sound

ONDADURTO TEATRO requires these equipments directly to the promoter.
Please if there is any doubt about the technical supply, contact us in advance.

>> *SEE the PLAN at the last page*

Please switch-off public lighting DURING THE PERFORMANCE and DURING THE FOCUS OF THE LIGHT and VIDEO REHEARSAL.

>> **Light:**

Lanterns:

- 10 FRESNEL **2 Kw** (c/w barn door and color) ARRI or ROBERT JULIAT model
- 10 FRESNEL **1.2 Kw** (c/w barn door and color) ARRI (>> sometimes we can use PC 1 Kw)
- 1 PROFILE ETC 750 watt >> 36° angle
- 1 VEDETTE **2.5Kw** FOLLOW SPOT with **color gels**
 - >> We need the light passing up to the head of the audience – put it on an high point.
 - >> FOLLOW SPOT COLOR CHANGE AVAILABLE
- 2 MARTIN ATOMIC 3000 STROBE 32A

Controls and wincher stand

- 1 light console 24/48 200 plus STRAND or similar
- 5 lift - wincher stand system >> n°3 of 3/3,50 mt of height / n°2 of 5/6 mt of height
- 1 intercom
- 4 DIMMER X 29 CH X 2,5 kw
 - >> WE WORK WITH THE SPOTS COMBINED SIMMETRICALLY LEFT/RIGHT ON 1 CHANNAL: we can combine the 1 kw spot

Cablings >> check the light plan in order to know about the passage of the cables

List of colors:

- 4 units of White >> no filters
- 8 units of Orange >> n°105
- 4 units of Primary Red >> n°106
- 6 units of Medium Blue >> n°132
- 4 units of Mauve >> n°126
- 4 units of Light Blue >> n°191

>> **Sound:**

- 1 audio console, model 16 ch YAMAHA 01V 96i or similar
- 4 PA speakers with amplification + 4 SUB – 5.000 watt (or more >> it depends by the space)
- 02 monitors wedge
- 1 microphone for the VOICE (radio micro HEADSET) >> *from our side*
- 1 microphone radio for instrument (no HEADSET) >> *from our side*
- 1 micro panoramic with a small stand >> *from our side*
- 1 D.I. box + effects

CABLING VERY IMPORTANT>> *we need long multichannel and long cable because of the long line way, check the light plan in order to know about the passage of the cables*

- 15 meters (or more, it depends from the distance of the controller area from the playground): **hard cable cross (yellow jacket) is required** >> carpet is not strong enough for the video cable

>> **Video:**

the company brings its own beamers: we don't need anything from your side.

The beamer will be put on the frontal part of the playground directly on the ground.

We don't need any support from you about that.

3 - EXTRA >> Back ground materials >> WE HAVE TO CHECK THIS POINT IN ACCORD WITH YOU

In case of no building on background

We need additional technical materials to hang 8 /10 screens as back side video screens. It will be not a compact surface.

We do not use a normal video screen.

>> **we will bring** with us 8/10 screen flags of 6,50 meters in high and 1,50 meters in wide each

The additional materials required are:

- 3 wincher lifts (arriving to 6mt of high - Mobiltech lift - Maximum lifting load capacity: around 270 kg)

- TRUSS SYSTEM 18 meters in long of, where we hang 8/10 flags by plastic tight strips

- 20 sand bags or weight discs of 20 kg each, or PLEASE check with us other solution.

- **it is really important to have 4 PLINTHS** to anchor the wincher lift when we go up with the flags for safety reasons: 2 on each side of the TRUSS SYSTEM

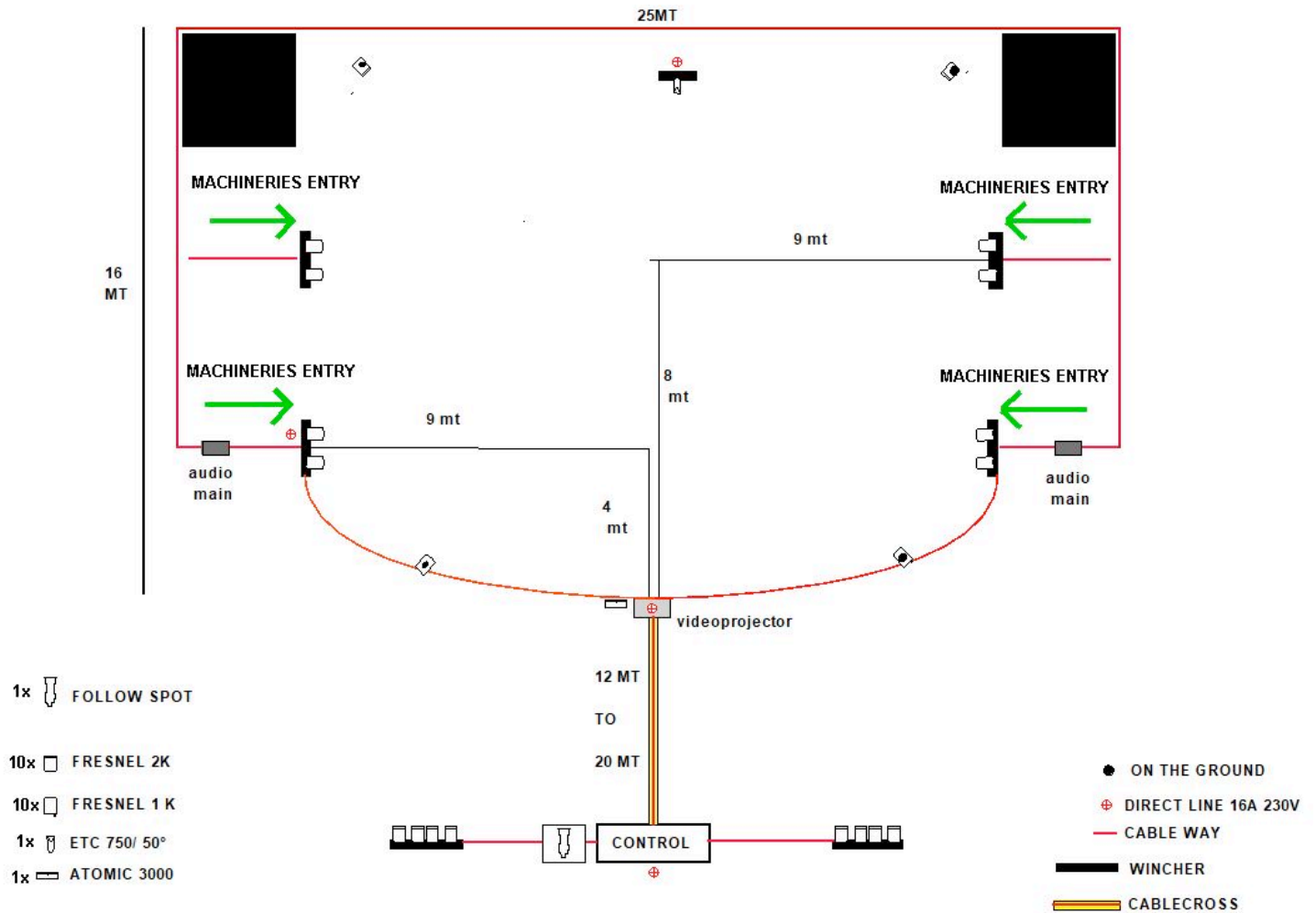
4 - Contact Phone Numbers

- Overall coordination: *Lorenzo Pasquali*
+39.339.5954230 (*castellano, english speaking*)
- Logistics: *Giulia Vanni*
+39.349.2236865 (*english speaking*)
- Tech director: *Roberto Mazzaro*
+39.333.4311039 / +49.176.81691419 (*castellano, english, speaking*)
- International manager: *Ute Classen*
+49.176.81691419 / +49.171.9347239 (*castellano, english speaking*)

If performance is planned with *live music* : additional requirements on sound equipment.

5 - ELECTRIC AND LIGHT PLAN

(Version MAY 2019)



Tech Contact Numbers

- Overall coordination
Lorenzo Pasquali
 +39.339.5954230 (*castellano, english speaking*)
- Tech director
Roberto Mazzaro
 +39.333.4311039 / +49.176.81691419 (*castellano, english, german speaking*)