

# TERRAMIA

## TECHNICAL RIDER – non-conventional venue

(Version MAY 2019)

### 1 – Electricity (for light / sound / video)

**35 Kw total electricity required**

**We need 2 separate lines (in case of different solution, please contact us)**

**First line 20 Kw max for dimming line (CEE power box of 63A with minimum 4 plug 32A 380-400v for dimmer)**

**Second line 15 Kw max for direct line (CEE power box of 32A with minimum 6 plug 16A 230v for the stage area + audio and video)**

Available for the artist from the beginning of construction.

The promoter is responsible for the cable connection between the point of power and the plug at the light wind-up / PA speakers / mixer-desk.

We need **2 connections 220 Volt plug 3 poles** ( 1 center/frontal side / 1 side left or side right of the stage area for the use of SCENERY STUFF – no DIMMER line )

We use the CEE BLUE PLUG 2P+E 16A 220V.

We have some adapters with us: Schuko Plug adaptor / Italian AC Power Plug adaptor

**Check:** please let us know about the connections / adapters in time before our arrivals in case we have to arrange a solution.

### 2 - Light + Sound + Video

ONDADURTO TEATRO requires these equipments directly to the promoter.

Please if there is any doubt about the technical supply, contact us in advance.

**>> LIGHT PLAN at the last page**

**>> Light:**

**Lanterns:**

- 12 DIMMER CHANNEL (2KW o more)
- 1 MARTIN ATOMIC 3000 STROBE or similar
- 16 PROFILE ETC 750 25/50 ZOOM degree (with framegrid)
- 10 PAR LED RGBW
- 2 FOG MACHINE FAZER (JEM GLACIATOR DYNAMIC model JEM ZR25 or similar)

**>> List of colors: NORMALLY we use LEE Filters**

- White >> no filters
- Full CTB >> n 201

### **Controls and wincher stand & Groundbase**

- 1 light console, model 1 universe 512 with cue and memory system Spark Compulite or Grand MA or similar

- 6 lift wincher stand system  
>> of 2/2,50 meters of height

- 27 GROUNDBASE FOR LIGHT

### **>> Sound:**

1 audio console, model 16 ch YAMAHA 01V 96i or similar

**(IMPORTANT >> WE USE MICROPHONES, so we have to equalize the voices)**

4 PA speakers with amplification + 4 SUB – 2.500 watt (or more >> it depends by the space)

02 monitors wedge

We use 1 LAVALIER + 1 HEADSET MICRO brought from our side: **IT MEANS, NOT REQUIRED FROM YOUR SIDE**

MODEL USED : SENNHEISER ewD1 series

**We need just to connect it to the mixer. Receivers' position is at the playground >> cable required from the playground to the controller area.**

### **>> Video:**

**the company brings its own beamers: we don't need anything from your side.**

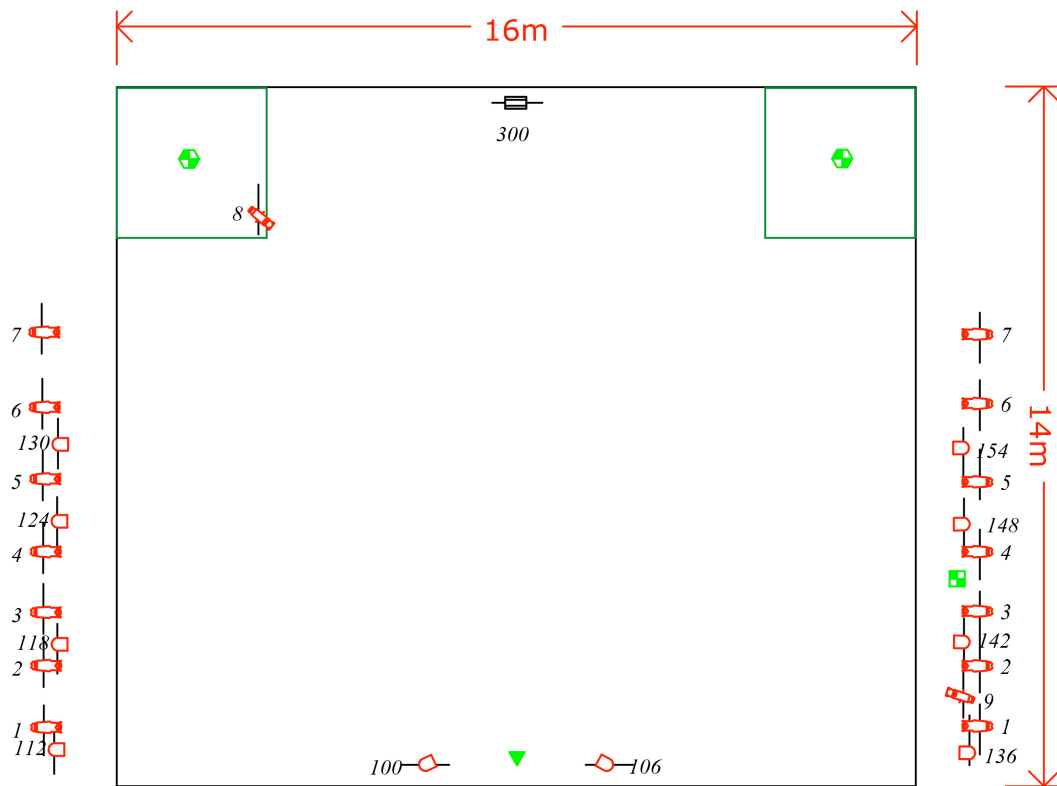
The beamer will be put on the frontal part of the playground directly on the ground.







We don't need any support from you about that.

## **3 - Contact Phone Numbers**

- Overall coordination: *Lorenzo Pasquali*  
+39.339.5954230 (*castellano, english speaking*)
- Logistics: *Giulia Vanni*  
+39.349.2236865 (*english speaking*)
- Tech director: *Roberto Mazzaro*  
+39.333.4311039 / +49.176.81691419 (*castellano, english, speaking*)
- International manager: *Ute Classen*  
+49.176.81691419 / +49.171.9347239 (*castellano, english speaking*)

## 4 - LIGTH PLAN – non-conventional venue (Version MAY 2019)



- |  |   |
|--|---|
|  Atomic 3000                        |  vga video point with 220V   |
|  Par Led                            |  2 microphone base with 220V |
|  Source 4 Zooms 25-50 degree (575W) |  line 220V                   |

## Tech Contact Numbers

- Overall coordination  
*Lorenzo Pasquali*  
+39.339.5954230 (*castellano, english speaking*)
- Tech director  
*Roberto Mazzaro*  
+39.333.4311039 / +49.176.81691419 (*castellano, english, german speaking*)